



SoftWriters Training Center

Getting the Most From Your Software



For FrameworkLTC and Sage Accpac

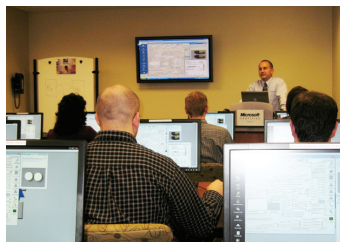
Problem: "We need to hit the ground running with our new software, and maximize our investment."

Solution: Classes at SoftWriters' Training Center, using a hands-on mock pharmacy for fast, effective learning.

People learn best by doing. SoftWriters wants users of its product to be power users, getting the greatest possible advantage from its solutions. So we created an ideal training environment, where pharmacy staff learn to use software in a realistic setting – complete with fully loaded databases that simulate an actual pharmacy.

Master the Mock Pharmacy

At SoftWriters' new Training Center, you won't just listen to lectures and take notes.



Instead, you'll sit at a real workstation, and access data in our mock pharmacy. You'll use printers and scanners, just like when you're on the job, and learn both must-know and advanced options for either FrameworkLTC®, our flagship product, or Sage Accpac ERP®.

Hands-On Help

Graduates of SoftWriters' Training Center learn to:

- Enter prescriptions and print labels
- Perform initial review by scanning labels
- Package and tote prescriptions
- Perform pharmacist's final review
- Print medical records and reports
- Prepare financial analysis with Sage Accpac

"Go ahead and mess it up." Trainees make mistakes with our data, not yours, in a stress-free environment, with no distractions, for optimal retention.



Quality Education

SoftWriters Training Center is run by seasoned professionals, and provides state-of-the-art amenities:

- 10 student workstations
- Large plasma monitors
- Realistic pharmacy data for practicing new skills
- Simulated linear workflow training
- Kitchen for breaks

SoftWriters will also bring any of our training offerings to your location.



SoftWriters Training Center is located in Allison Park, PA, just 30 miles from the Pittsburgh International Airport, and a short drive from affordable lodging, diverse restaurants and downtown Pittsburgh.

Contact SoftWriters TODAY
for more information:
412-492-9841.



www.frameworkltc.com

SoftWriters, Inc. • 3960 William Flynn Highway • Suite 100 • Allison Park, PA 15101 • info@softwriters.com • 412-492-9841

© Softwriters, Inc. Sage Software, the Sage Software logos, and the Sage Software product and service names mentioned herein are registered trademarks or trademarks of Sage Software, Inc., or its affiliated entities.